

Florham Park Schools

9/10/21



Welcome to the 2021-22 school year! Though additional guidance may be provided from the State/NJDOH regarding operational procedures, below are the final updates as we enter the last weekend of summer. Please continue to follow the recommendations of the Florham Park Health Department and the New Jersey Department of Health. We are excited for schools to officially open to students on Monday, September 13th!



Lunch/Recess

- Lunch and recess will be held in person at every school
- Bring lunch or the PTA will provide lunch options
- Students will be spaced 6ft apart while eating
- Masks are not required outdoors for recess

Travel

- As of May 17th, the NJ Travel Advisory is no longer in effect
- Unvaccinated travelers must quarantine after international travel according to CDC guidance
- Contact your school nurse with questions



Facilities

- Our classrooms and other spaces continue to reflect best practices with desk/work stations being separated to the extent practicable
- Markers and signs in hallways to indicate traffic flow
- Hygiene best practices, sanitizer readily available
- Hallway doors are allowed open (as per the FP Fire Dept.) to increase ventilation, as well as additional precautions

Curriculum & Instruction

- Resuming of Full-Time, In-Person Instruction for all students. As per State mandate, there is no option for remote instruction for the 21-22 school year.
- Covid positive & quarantined students will receive modified remote instruction. Students will attend core subjects virtually "synchronously" and students will be provided with asynchronous assignments for Specials



Health & Safety

- Parents and guardians are expected to conduct a daily temperature and health check before school
- If your child is sick, please report the symptoms to the school nurse
- Schools will continue to provide hand washing time and hand sanitizer throughout the day

Masks

- All students in preschool through 12th grade, as well teachers, staff members, and visitors, must wear masks inside all schools
- Formal mask breaks will be provided for all students
- Masks required on buses
- Masks will not be required for recess or PE



Quarantine and Attendance

- If a student is Covid positive or a close contact, a student enters a Covid exclusionary period and will need to quarantine. Please coordinate with school nurse
- Vaccinated individuals will not need to quarantine if close contact
- Quarantine times vary according to regional levels. Please coordinate with school nurse



Athletics, Arts, & Co-Curriculars

- FP District will be offering co-curricular activities in all three schools
- After-school sports at RMS will resume



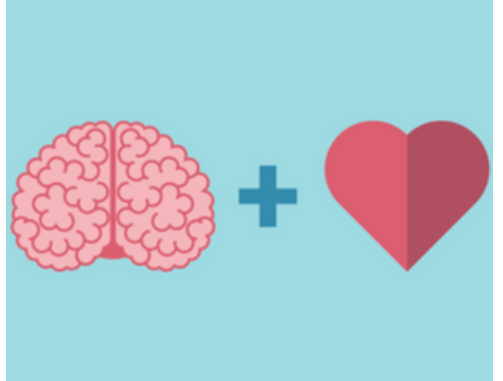
Events, Assemblies, & Field trips

- Field Trips will resume if safety measures can be met
- Assemblies will resume if safety measures can be met. We will also continue to explore virtual assemblies
- Building specific events with current guidelines will be sent prior to all school planned events

Social & Emotional Learning

Florham Park District has adopted a wonderful Social & Emotional Curriculum, Second Step, to support our students and families

- Unit and lesson information will be provided to families throughout the year



District Contact Information

Briarwood School

Principal: Samantha Heimple, samantha.heimple@fpks.org

Main Number: 973-822-3884

Nurse's Office: Kristen Castellano, ext 3002

kristen.castellano@fpks.com

Brooklake School

Principal: Thomas Connolly, thomas.connolly@fpks.org

Main Number: 973-822-3888

Nurse's Office: Stephanie Di Leo, ext 4003

stephanie.dileo@fpks.org

Ridgedale School

Principal: Nicolas Steffner, nicholas.steffner@fpks.org

Main Number: 973-822-3855

Nurse's Office: Marian Kentner, ext 2004

Marian.kentner@fpks.org

District Office

Main Number: 973-822-3880

Superintendent: Dr. Steven Caponegro, steve.caponegro@fpks.org

Business Administrator: John Csatlos, john.csatlos@fpks.org

Director of Special Services: Jane Steffen, jane.steffen@fpks.org

Supervisor of Curriculum and Instruction: Brian Silkensen, brian.silkensen@fpks.org

Supervisor of ELA: Dr. Christy O'Connor, christy.oconnor@fpks.org

Technology Coordinator: Jim Stiles, jimstiles@fpks.org

Transportation Specialist: Linda Guerin, linda.guerin@fpks.org

